

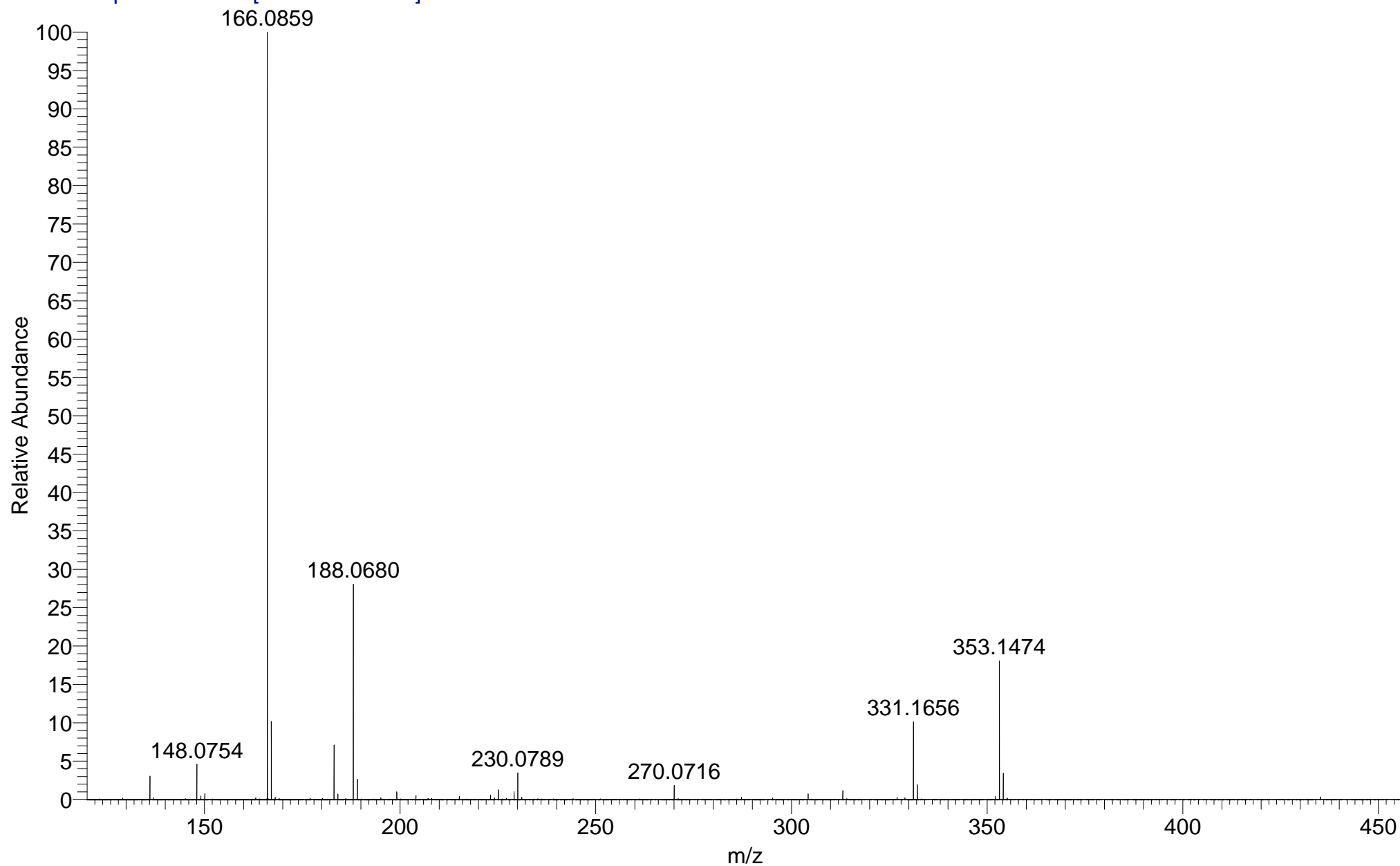
MLO108
(MeOH)/MeOH+NH₄OAc
C₉H₁₁NO₂

EPSRC National Facility Swansea
LTQ Orbitrap XL

BATJAM-MO
16/06/2017 12:50:27

BATJAM_LTF97_32795 #46-59 RT: 0.74-1.04 AV: 12 SM: 7G NL: 2.64E7

T: FTMS + p NSI Full ms [120.00-1935.00]



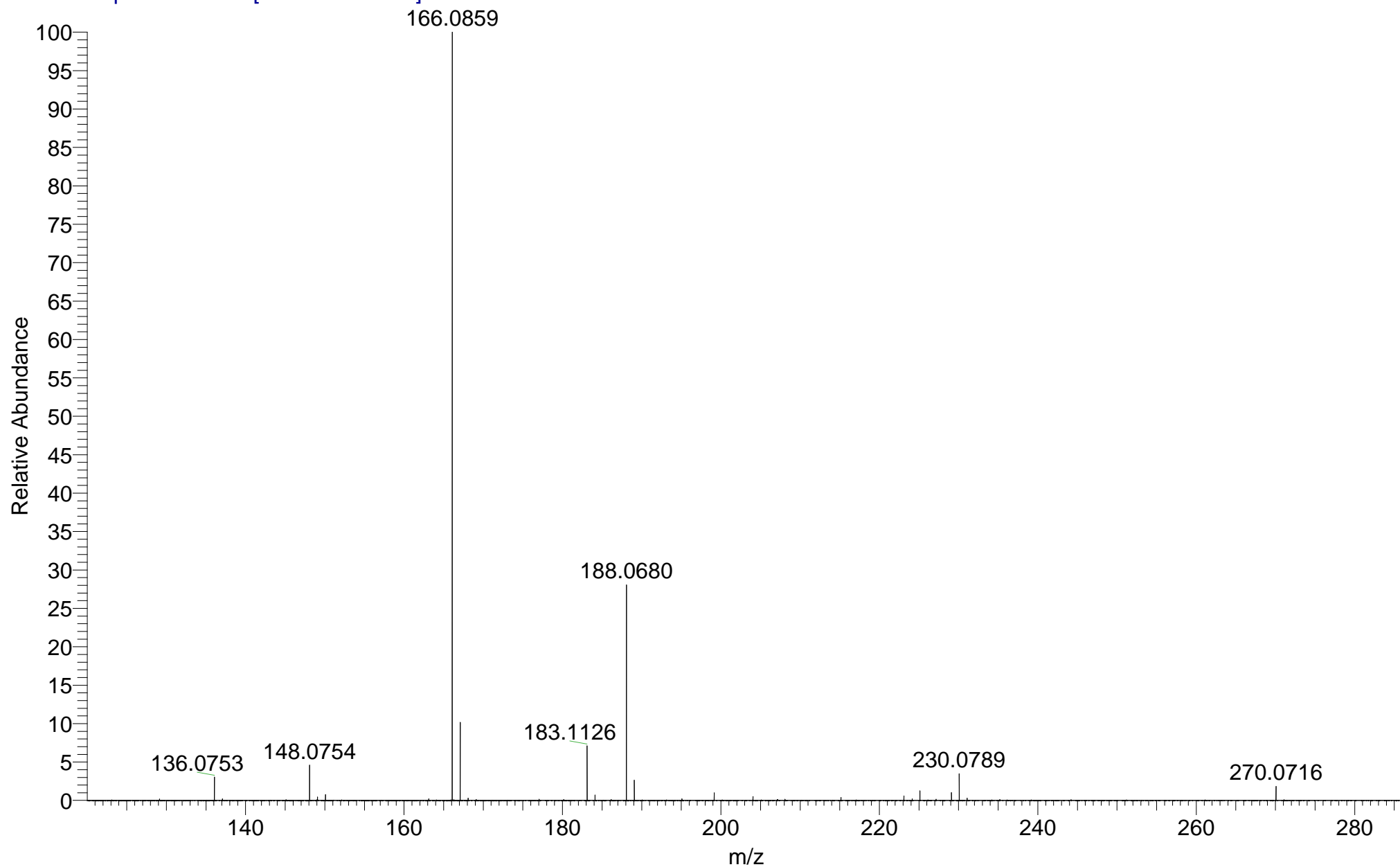
MLO108
(MeOH)/MeOH+NH₄OAc
C₉H₁₁NO₂

EPSRC National Facility Swansea
LTQ Orbitrap XL

BATJAM-MO
16/06/2017 12:50:27

BATJAM_LTF97_32795 #46-59 RT: 0.74-1.04 AV: 12 SM: 7G NL: 2.64E7

T: FTMS + p NSI Full ms [120.00-1935.00]



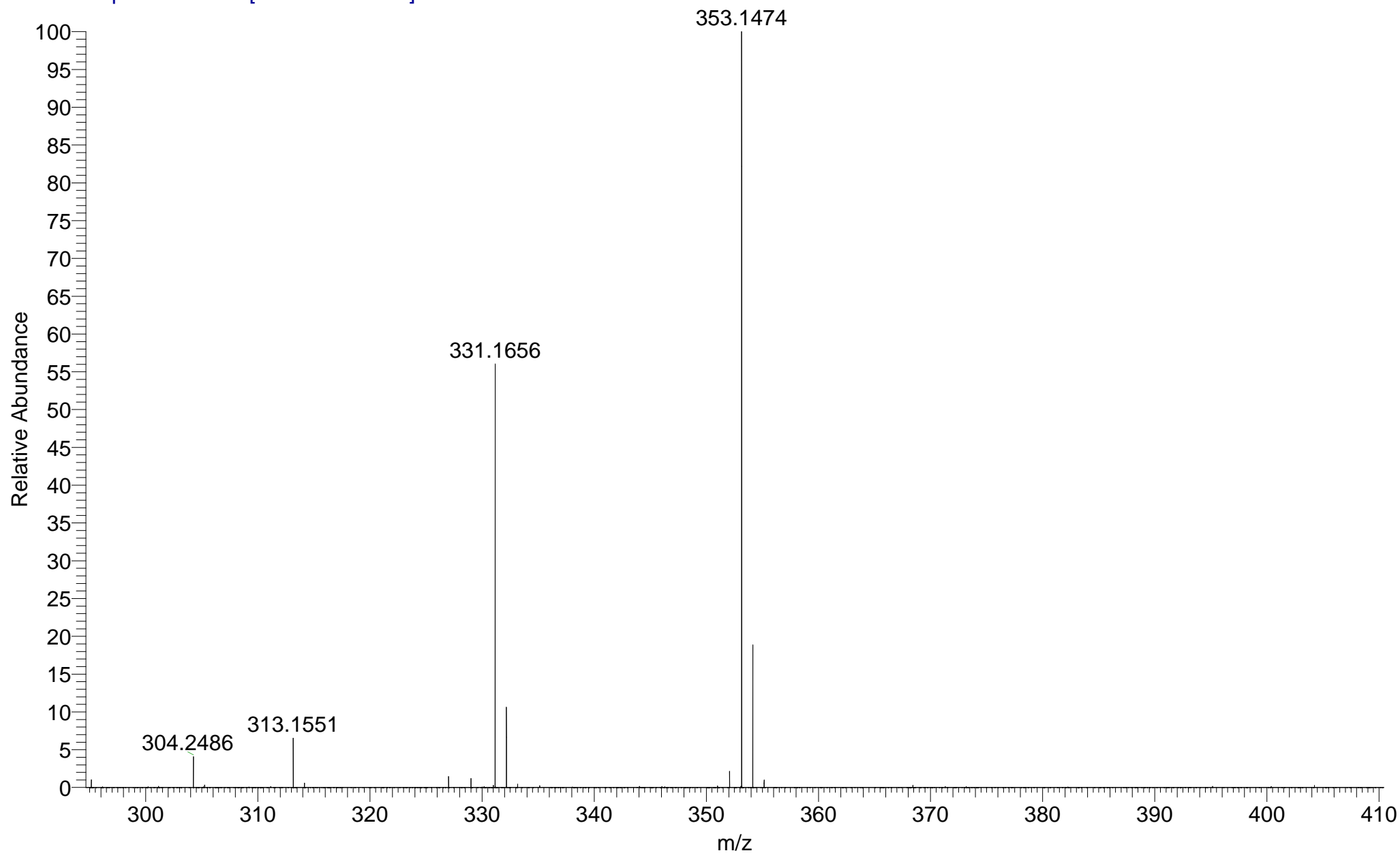
MLO108
(MeOH)/MeOH+NH₄OAc
C₉H₁₁NO₂

EPSRC National Facility Swansea
LTQ Orbitrap XL

BATJAM-MO
16/06/2017 12:50:27

BATJAM_LTF97_32795 #46-59 RT: 0.74-1.04 AV: 12 SM: 7G NL: 4.77E6

T: FTMS + p NSI Full ms [120.00-1935.00]

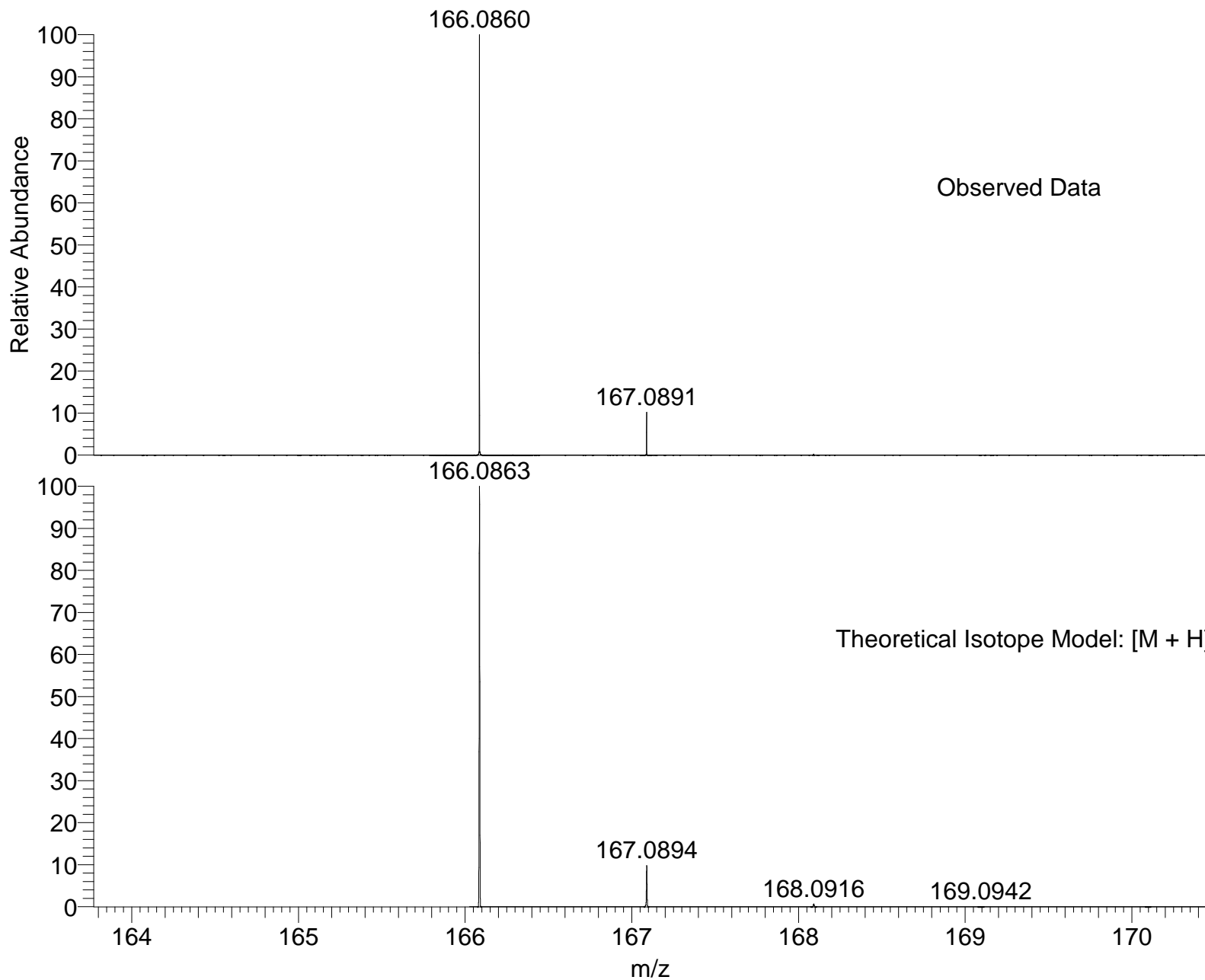


MLO108
(MeOH)/MeOH+NH₄OAc
C₉H₁₁NO₂

EPSRC National Facility Swansea
LTQ Orbitrap XL

BATJAM-MO
16/06/2017 12:50:27

SM: 7G



NL:
2.70E7
BATJAM_LTF97_32795#41-
58 RT: 0.65-1.04 AV: 16 T:
FTMS + p NSI Full ms
[120.00-1935.00]

NL:
2.11E4
C₉H₁₁NO₂H:
C₉H₁₂N₁O₂
p (gss, s /p:40) Chrg 1
R: 40000 Res .Pwr . @FWHM

Isotope:	Min. .. Max.
14 N	0....15
16 O	0....15
12 C	0....30
1 H	0....50
23 Na	0....0
Tolerance Window:	+ - 5.00 ppm
Db/Ring Equiv:	-3.. 300
Fits:	300

N-Rule:	Do not use
Charge:	1

Mass	Theoretical Mass	Delta [ppm]	RDB	Composition
166.0860	166.0863	-1.5	4.5	C ₉ H ₁₂ O ₂ N ₁